



CONECDASH
EMPOWERING EFFICIENCY

CONECDASH PRODUCT CATALOGUE



PRODUCT OF –
VAIBAVSRI SOLUTIONS
INDIA PRIVATE LIMITED

EMPOWERING EFFICIENCY

Conecdash is an industrial-grade monitoring software designed to give you complete, real-time visibility over your facility's energy, flow, and process parameters from a single unified platform. The suite targets specific monitoring needs ranging from compressor room monitoring, data logging, reporting to plant-wide energy management.

The platform supports any RS485 instrument, provides 360° plant coverage, and offers 24/7 live monitoring.

WHY CONECDASH?

Every Conecdash product is built on reliability, configurability, and actionable intelligence.



REAL-TIME VISIBILITY

Live dashboards provide continuous updates for instant awareness of energy, flow, pressure, temperature, and electrical parameters.



SMART ALERTING

Configurable min/max thresholds trigger instant notifications, while active, acknowledged, and resolved alerts are tracked for accountability.



RICH REPORTING

Generate professional PDF and CSV reports with customizable date ranges and intervals for audits and compliance.



DEEP CONFIGURABILITY

All parameters, from Modbus device discovery to multi-channel sensor scaling, are configurable to match your plant's topology.



FACILITY HIERARCHY

Organize assets into locations and sub-locations to easily identify which areas drive consumption.



SECURE ACCESS CONTROL

Role-based login separates administrative capabilities from viewer access to keep data protected.

LIVE OVERVIEW

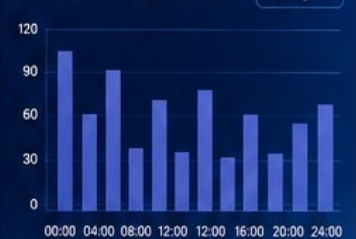


ALERTS

	High Pressure Compressor Room 1 09:21 AM	HIGH
	Low Flow Cooling Tower 08:34 AM	MEDIUM
	High Temperature Boiler House 07:31 AM	HIGH

[VIEW ALL](#)

CONSUMPTION TREND



24/7
LIVE MONITORING



SUPPORTS ANY
RS485 INSTRUMENT



360°
PLANT COVERAGE



BUILT FOR
INDUSTRIAL RELIABILITY



Website :
<https://vaibavsri.com/solutions>



Contact :
+91 9442177054 +91 7904973886



sales@vaibavsri.com



1. MANUAL DATA COLLECTION

Time-consuming, error-prone and incomplete data.



CONECDASH SOLUTION

24/7 AUTOMATED MONITORING. ZERO MANUAL EFFORT.



Address Discovery Wizard
Auto-scans Modbus registers and eliminates manual address hunting.



Abstract Report Engine
Automates compliance with professional PDF/CSV reports on your schedule.



Continuous Monitoring
Any RS485 instrument. Any parameter. Always monitored.



2. ENERGY WASTAGE

Hidden losses leading to high operational costs.



REAL-TIME VISIBILITY. PINPOINT WASTE. SAVE ENERGY.



Location Hierarchy Engine
Track live consumption roll-ups across locations and pinpoint exact areas of waste.



Electrical Parameter Suite
Monitor kWh, Power Factor, RPM & more for pump and compressor optimization.



Live Dashboards
Real-time visibility into power, flow, pressure & more to isolate inefficiencies.



3. EQUIPMENT FAILURE

Unexpected breakdowns cause loss and safety risks.



PROACTIVE ALERTS. PROTECT ASSETS. PREVENT BREAKDOWNS.



Smart Alerting
Instant notifications on threshold breaches (min/max).



Color-Coded Gauges
Live visual warnings: Green (OK), Orange (Caution), Red (Critical).



8-Channel Scanner Integration
Monitor vibration, temp., dew point & more for complete equipment health.



4. UNPLANNED DOWNTIME

Reactive maintenance leads to delays and lost productivity.



PREDICT ISSUES. ACT EARLY. MAXIMIZE UPTIME.

- ! Active
- ! Acknowledged
- ✓ Resolved

Alert Lifecycle Management
Track active, acknowledged and resolved alerts from start to finish.



Interactive Historical Charts
24-hour zoom, pan & multi-parameted analysis to spot degrading trends early.



Timestamped Log Table
Detailed operational history for root-cause analysis and audits.



5. DATA SILOS

Fragmented data across systems and locations.



ONE PLATFORM. ALL DATA. TOTAL CLARITY.



Unified Platform Architecture
Unify energy, process & environmental data under one powerful interface.



Dual-Mode Sync
Cloud Mode + Mobile Apps bridge field & office for real-time sync.



Built-in Team Chat
Share text & images within the system to align and resolve faster.

CONECDASH DELIVERS STRONG RETURN ON INVESTMENT



REDUCE ENERGY COSTS
5% - 20%



INCREASE ASSET LIFESPAN
20% - 30%



REDUCE DOWNTIME
30% - 50%



IMPROVE COMPLIANCE & REPORTING
100% ACCURATE



BOOST OPERATIONAL EFFICIENCY
10% - 25%



REAL-TIME VISIBILITY



SMART ALERTING



RICH REPORTING



DEEP CONFIGURABILITY



SECURE & SCALABLE

1. UNIVERSAL:

Flexible Multi-Section Industrial Monitor

Universal is the most flexible product in the suite, adapting to your terminology, device topology, and reporting style. It works as a standalone edge device application or as a cloud-based management console.



Standard: any parameter via RS485 — works with any RS485-compatible meter



Edge Mode: standalone local monitoring with section-based organisation



Cloud (Web) Mode: browser-accessible live dashboard and report portal — exclusive to Universal



Native Android App and browser-based iOS Web App — the only Conectedash product with mobile app access



Auto address discovery — scan Modbus register ranges automatically



Colour-coded live gauge indicators (Green/Orange/Red) per threshold



Click-to-expand live historical charts with 24-hour zoom/pan capability



Reports: Individual Charts, Combined Chart, Data Table, and Statistics



Alert management — Active → Acknowledged → Resolved workflow



PDF and CSV export for all historical reports

LIVE DASHBOARD EXAMPLE



EDGE MODE (LOCAL)

Run on plant PC for standalone monitoring within your network.



CLOUD (WEB) MODE (REMOTE ACCESS)

Access live dashboards and reports from anywhere, anytime.



ANDROID APP (NATIVE)

Native Android app for on-the-go monitoring.



iOS WEB APP (BROWSER)

Browser-based iOS web app for seamless access.

KEY FEATURES



EDGE + CLOUD DUAL MODE

Run locally on a plant PC (Edge Mode) or access via any web browser (Cloud Mode) using the same data.



NATIVE MOBILE APP ACCESS

The only Conectedash product featuring a native Android app and a browser-based iOS web app.



SECTION-BASED ORGANISATION

Group equipment into named sections (e.g., Chiller Plant) with dedicated live pages and custom images.



SLAVE DEVICE WIZARD

Configure any RS485-compatible meter or sensing device with full Modbus settings and auto-log capabilities.



REPORT STATISTICS MODULE

Provides Min, Max, and Average summaries across selected time ranges for efficiency benchmarking.



DRILL-DOWN NAVIGATION

Navigate from Department to Equipment Type to Individual Machine.



MULTI-PARAMETER REPORTS

Generate individual or combined charts and export to PDF or CSV.



FLEXIBLE & ADAPTABLE TO ANY ENVIRONMENT



REAL-TIME VISIBILITY ANYTIME, ANYWHERE



SMART ALERTING & ACTIONABLE INSIGHTS



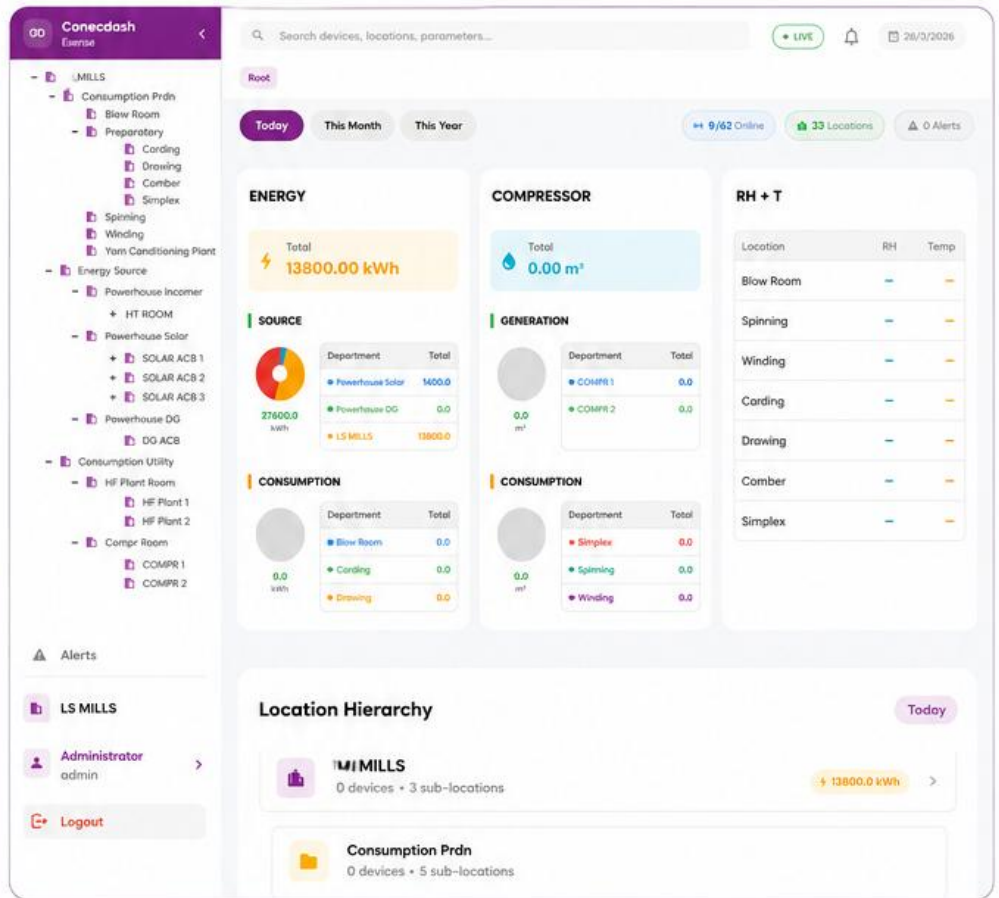
REPORTS & ANALYTICS FOR BETTER DECISIONS

2. ESENSE: Energy & Flow Intelligence Platform

Esense is a comprehensive, edge-deployed Energy and Flow Intelligence Platform designed for facilities operating multiple Modbus devices across different areas.

From a single dashboard, you can monitor electrical energy, compressed air flow, and relative humidity & temperature — with full location hierarchy, team collaboration, and multi-format reporting.

Its guided 6-step Setup Wizard lets you onboard every device, define its parameters, and organise your facility hierarchy in under an hour — no specialist integration knowledge required.



Default parameters: Power, Flow, Pressure, Temperature, and Relative Humidity — via Flowmeter, Energy Meter, and Sensor inputs



Esense supports any RS485 instruments/devices



Edge Mode deployment — runs as a standalone local monitoring platform



Facility hierarchy (main locations → sub-locations → devices) with live consumption roll-ups



Pie chart source/consumption breakdowns for Energy and Flow



Real-time in-app Chat with image attachments for team collaboration



Abstract reports: Today, Hourwise, Daywise, Monthwise, Yearwise, and Custom range



Advanced alert management — configurable thresholds with full lifecycle tracking



Role-based login (Admin / Viewer) with secure company-scoped access

LIVE DASHBOARD OVERVIEW



Source & Consumption Breakdown

Instant pie chart view of energy and flow distribution by department or location.



Facility Hierarchy Roll-ups

Navigate your plant structure and view real-time roll-ups at every level.



Real-time Monitoring

Live values of energy, flow, RH, temperature and more — all in one dashboard.



Active Alerts at a Glance

View and acknowledge active alerts with complete status visibility.

KEY FEATURES



6-STEP SETUP WIZARD

Onboard devices, configure parameters, and organize hierarchy in under an hour without specialist integration knowledge.



LOCATION HIERARCHY ENGINE

Build unlimited nested location trees to view total, direct, and sub-consumption at each node.



BUILT-IN TEAM CHAT

Real-time messaging allows users to share observations and attach images directly within the platform.



ADDRESS DISCOVERY WIZARD

Automatically scans Modbus address ranges to find active registers, eliminating manual address hunting.



ABSTRACT REPORT ENGINE

Filter reports by energy, flow, or both, with time granularity ranging from hourly to yearly.



ALERT LIFECYCLE MANAGEMENT

Flags active alerts in real-time and retains resolution history for accountability.



IMPROVE ENERGY VISIBILITY



REDUCE COSTS & WASTAGE



ENHANCE OPERATIONAL EFFICIENCY



DATA-DRIVEN DECISIONS WITH CONFIDENCE

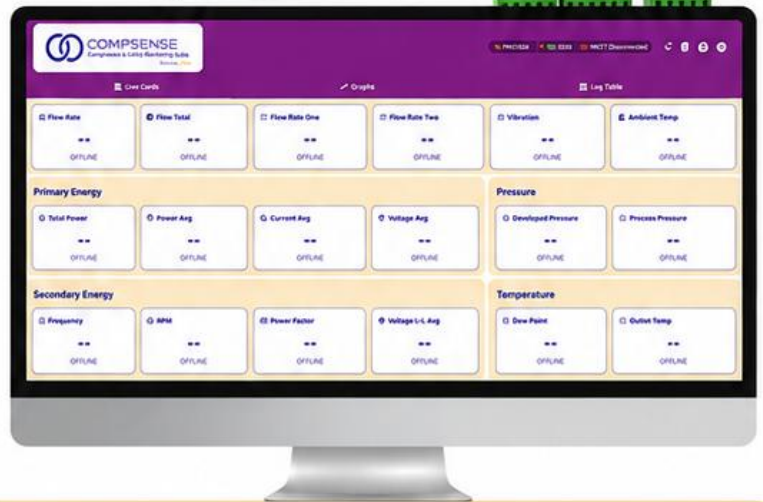
3. COMPSENSE: Compressor & Utility Monitoring Suite

Compense is a dedicated edge monitoring solution for compressors, pumps, and compressed air systems. It integrates directly with the **MFM PM2160-A Energy Meter** and **Masibus 8208 8-Channel Scanner**, delivering real-time electrical and process data to a clean, purpose-built dashboard.

**MFM PM2160-A
Energy Meter**



8-Channel Scanner



Whether you're tracking power consumption, monitoring flow rates, or keeping an eye on pressure and temperature, Compense puts every critical parameter on one screen — with full graphing, logging, and professional report generation built in.

- Default parameters: Power, Pressure, Temperature, Flow — via connected MFM (PM2160-A), Masibus-8208, and Instrument sensors
- Optional: any parameter from corresponding Conectedash-Compense meters with RS485 connectivity
- Edge Mode deployment — runs as a standalone local monitoring platform (no cloud access)
- Live Energy Monitoring — kWh, Average Power, Current, Voltage, Frequency, Power Factor & RPM
- 8-Channel Scanner integration — Flow, Pressure, Vibration, Temperature, Dew Point & more
- Interactive line graphs with zoom, pan, and Y-axis scaling for trend analysis
- Log Table with timestamped parameter records for auditing and troubleshooting
- Professional PDF Report generation with machine details, combined charts & analytics
- Quick-action live cards — single click to graph, double-click for full-screen view
- Configurable alert thresholds and unit conversion (Read Unit vs Display Unit)

DEPLOYMENT & SYNC OPTIONS

DEPLOYMENT MODES



**EDGE MODE
(DESKTOP APPLICATION)**
Installed as a native .exe on a Windows PC. Runs locally without requiring internet access for core monitoring.



**CLOUD MODE
(WEB APPLICATION)**
Accessed via a URL in any browser on PC or mobile. Requires no installation and is always up-to-date.



SYNC OPTIONS



NETWORK SYNC (LOCAL LAN)
Up to 3 PCs on the same local network can mirror live data from the main PC without internet.

Up to
3 PCs



CLOUD SYNC
Data is saved to the cloud and pushed to all connected PCs and mobile devices in real-time via the web app.



Real-time Monitoring



Actionable Insights



Reduce Downtime

















Improve Efficiency



Save Energy & Costs

PRODUCT COMPARISON

FEATURES	 CONECDASH ESENSE	 CONECDASH UNIVERSAL	 CONECDASH COMPENSE
 Primary Application	Environmental, Energy, Process Parameter Monitoring	Enterprise-wide Industrial Monitoring for Any RS485-Based Instrument	Dedicated Compressor and Pump Monitoring with Utility Analytics
 Supported Parameters	Power, Flow, Pressure, Temperature, RH, and any RS485 supported parameters	Any parameter available through RS485 meters/instruments	Power, Pressure, Temperature, Flow, Pump Parameters, and sensor inputs
 Standard Instrument Support	Flow Meter, Energy Meter, Sensor Inputs ,Any RS485 Enabled instrument	Any RS485-enabled Meter/Instrument	Primary Kit consists - MFM (2160-A), Masibus 8208, Pump Monitoring Instruments
 Deployment Mode	Edge	Cloud / Edge	Edge (Kit)
 Monitoring, Logging & Reporting	Yes	Yes	Yes
 Alert System	Advanced Alerts	Standard Alerts	Standard Alerts
 Synchronization	Network	Cloud Sync (Cloud Mode)	Not Applicable
 User Management	Yes	Yes	Kit user
 Mobile App Support	No	Native Android App & Browser-based iOS Web App	No
 Chat Mode	Yes (Image sharing & Interaction)	No	Not required
 Hierarchy	Dynamic Hierarchy	Fixed Hierarchy	NA



COMPLETE VISIBILITY

Monitor energy, flow, pressure, temperature and more from a single unified platform.



ACTIONABLE INSIGHTS

Turn real-time data into smarter decisions and operational efficiency.



RELIABLE & SECURE

24/7 monitoring with role-based access and advanced alert management.



SCALABLE SOLUTIONS

Choose the right product for your need and scale as your operations grow.



Website :
<https://vaibavsri.com/solutions>



Contact :
+91 9442177054 +91 7904973886



sales@vaibavsri.com