



### Detection ranging solutions

- 2D laser scanners
- 3D laser scanners
- Multi-layer scanners
- Application dedicated laser scanners



### Fluid Sensors

- Level Sensors
- Flow sensors
- Pressure sensors
- Temperature sensors



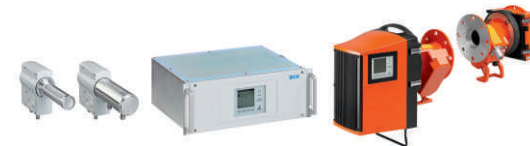
### System solutions

- Collision awareness systems
- Flexible automation systems
- Object detection systems
- Profiling systems
- Security systems
- Track and trace systems



### Gas analyzers

- Gas transmitters
- In-situ gas analyzers
- Extractive gas analyzers



### Dust measuring devices

- Scattered light dust measuring devices
- Transmittance dust measuring devices
- Gravimetric dust measuring devices



SENSORS, SYSTEMS AND SERVICES  
FOR MORE EFFICIENT AUTOMATION

THIS IS **SICK**  
Sensor Intelligence.

## SICK INDIA PRIVATE LIMITED

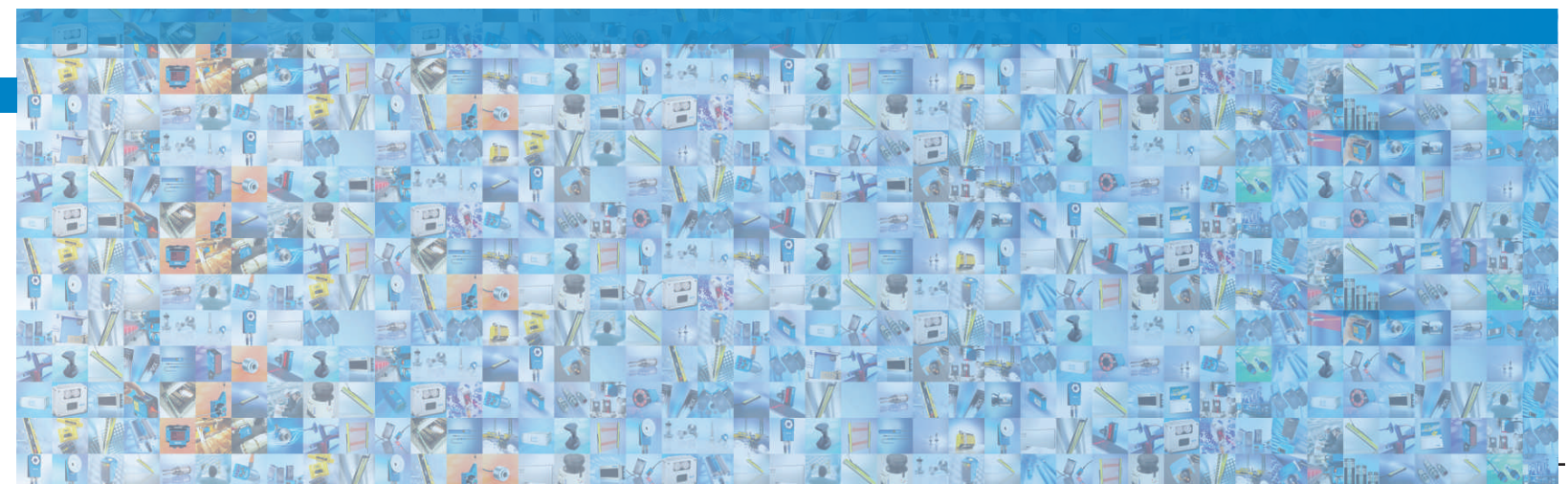
Registered Office : 215, Western Edge II, Western Express Highway, Borivali (E), Mumbai : 400 066. Tel : +91 - 22 - 6119 8900

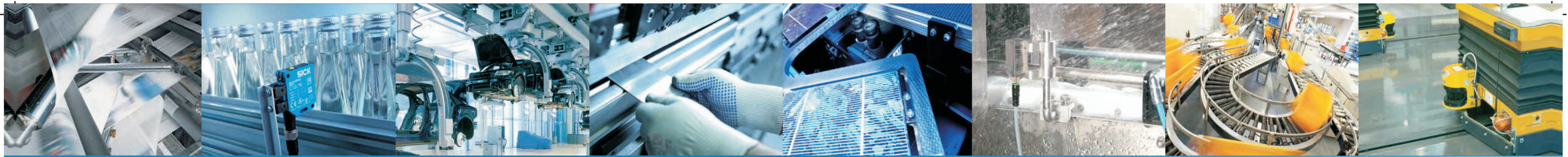
### Regional Offices :

<b>AHMEDABAD</b>	<b>BANGALORE</b>	<b>CHENNAI</b>	<b>GHAZIABAD</b>	<b>KOLKATA</b>	<b>PUNE</b>
+91-79-26563245	+91-80-32417858	+91-44-22443833	+91-120-4238602	+91-8444077700	+91-20-65001355

Email : [info@sick-india.com](mailto:info@sick-india.com)

Website : [www.sick-india.com](http://www.sick-india.com)





### Photoelectric Sensors

- Multitask photoelectric sensors
- Miniature photoelectric sensors
- Small photoelectric sensors
- Compact photoelectric sensors
- Cylindrical photoelectric sensors
- Fiber-optic sensors and fibers



### Proximity sensors

- Inductive proximity sensors
- Magnetic proximity sensors
- Capacitive proximity sensors



### Magnetic cylinder sensors

- Analog positioning sensors
- Sensors for t-slot cylinders
- Sensors for c-slot cylinders
- Sensors for other cylinder types



### Registration sensors

- Contrast sensors
- Markless sensors
- Color sensors
- Luminescence sensors
- Fork sensors
- Array sensors
- Register sensors



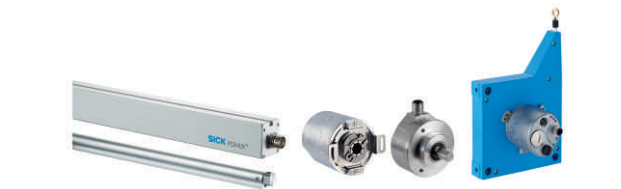
### Motor feedback systems

- Rotary HIPERFACE®
- Rotary HIPERFACE DSL®
- Rotary incremental
- Rotary incremental with commutation
- Linear HIPERFACE®



### Encoders

- Absolute encoders
- Incremental encoders
- Linear encoders
- Wire draw encoders



### Automation light grids

- Advanced automation light grids
- Standard automation light grids
- Smart light grids



### Opto-electronic protective devices

- Safety laser scanners
- Safety light curtains
- Safety camera systems
- Multiple light beam safety devices
- Single-beam photoelectric safety switches
- Mirror columns and device columns



### Safety switches

- Electro-mechanical safety switches
- Non-contact safety switches
- Safety command devices



### sens:Control - safe control solutions

- Safety controllers
- Safe sensor cascade
- Safety relays



### Traffic sensors

- Tunnel sensors
- Overheight detectors
- Visual range measuring devices



### Identification solutions

- Bar code scanners
- Image-based code readers
- Hand-held scanners
- RFID



### Vision

- Vision sensors
- Smart cameras
- High-end cameras



### Distance sensors

- Short range distance sensors (displacement)
- Mid range distance sensors
- Long range distance sensors
- Linear measurement sensors
- Ultrasonic sensors
- Double sheet detection
- Optical data transmission
- Position finders

